

Teesside University



Who are we?

Teesside University was officially opened as *Constantine Technical College* in **1930**, before becoming a polytechnic in 1969, and finally granted university status in 1992.

Two campuses **Middlesbrough** and **London**

➤ **Over 25,000 students**

➤ **Over 50 nationalities**

➤ **30% International students**

Our Vision

Teesside will be a leading University with an international reputation for **academic excellence** that provides an **outstanding student and learning experience** underpinned by **research, enterprise and the professions**.

Our Mission

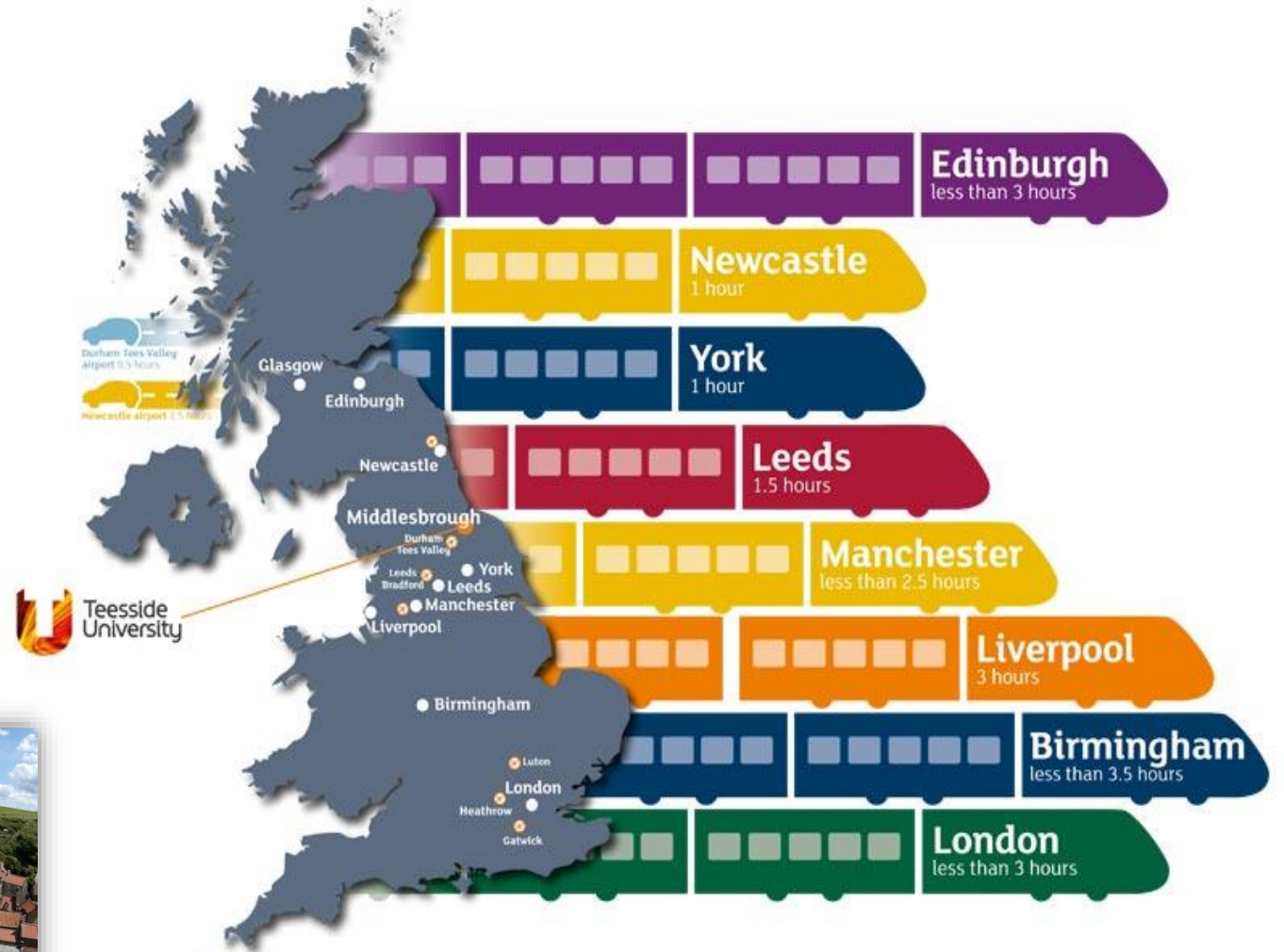
Teesside University generates and applies knowledge that contributes to the **economic, social and cultural success** of students, partners and the communities we serve.

Through education enriched by research, innovation, and engagement with business and the professions, **we transform lives and economies**.

*data for student numbers has been prepared based on the 2022/23 HESA student record

Where are we?

- Our main campus is in the heart of **Middlesbrough**
- 10-minute walk to shops, entertainment, restaurants and train/bus stations
- 30 minutes from **Teesside International Airport** and 1 hour from **Newcastle International Airport**





Animal Sciences, Biosciences, Chemistry & Pharmaceutical Sciences, Food & Nutrition, Forensic & Crime Scene Sciences, Geosciences, Nursing & Health, Sport & Exercise.



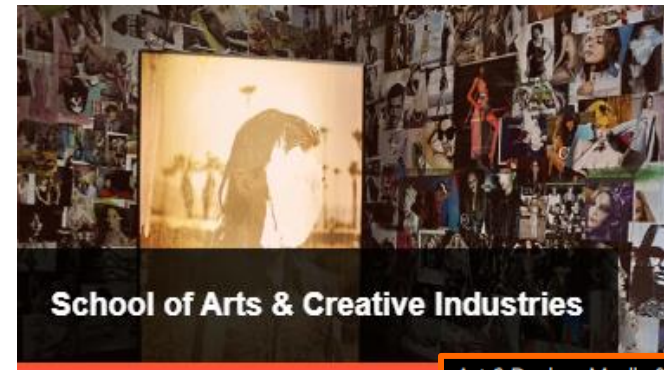
Accounting & Economics, Aviation & Tourism, Business Management & Enterprise, Human Resource Management, Marketing & Events



Criminology, English & Creative Writing, History, Education & Youth, Law, Policing, Politics, Psychology, Social Work, Sociology



Computing & Cyber Security, Engineering & Construction, Animation, Concept Art & Visual Effects, Computer Games



Art & Design, Media & Journalism, Music Production, Performing Arts

Our Campus

AMBITION
DELIVERED
TODAY

University accommodation located on the campus, such as **Cornell Quarters**

Vibrant **on-campus student community**

Diverse and multicultural

Student Union

Gym and Sports Equipment

24/7 Library access

Student Learning Support available throughout the year



Cornell Quarters

- En-suite single rooms
- Laundry facilities
- Free gym and cinema room
- Shared kitchen and diner
- 1 minute walk to campus



Exchange Students



Key Information

AMBITION
DELIVERED
TODAY

Term Dates

Welcome week: 15-19 September 2025
Semester 1: 22 September 2025 - 16 January 2026
Semester 2: 19 January - 15 May 2026

Winter break: 15 December 2025 - 2 January 2026
Spring break: 30 March - 17 April 2026

What we expect from you!

- Be keen to **engage** with tutors and other students!
- **Attend** ALL classes
- **Embrace** other backgrounds and cultures
- Meet our English Language requirement ...**IELTS 6 or equivalent**

What's Included

Student Support
24/7 Library access
Learning materials
UK Sim Card
TU merchandise
Social Activities & Trips
.....and much more!



Student Support

Student support will be available throughout your time with us!



A member of the TUGlobal Team, **Alison Moore**, will help and guide you as you arrive, organise social activities and support you throughout your time with us.

Students' Union

- Societies: make new friends and its **free to join!**
- Events Page: keep track of everything going on
- Free confidential advice and support



Our **Library** has 24/7 access!

- Find books, journals, articles and more..
- Learning Support
- Online and in person workshops
- Study Skills tutorials and much more!



Student Life Building has support in various aspects:

- IT support
- Faith & Reflection
- Health & Wellbeing
- Learning Support
- and much more!



Social Activities

Such as.....

Whilst we encourage students to explore the UK during their stay **FREE** Social activities will be arranged to help showcase our beautiful region!



Testimonial...

“I undertook a mobility programme at Teesside University and studied **Mechanical Engineering**. My time at Teesside was an incredibly enriching experience, both academically and personally. The university’s state-of-the-art facilities, experienced faculty, and hands-on approach to learning helped me develop essential technical skills and a deeper understanding of my field.

Beyond academics, the diverse and inclusive student community allowed me to engage with people from different cultures, broadening my global perspective. The strong student support services ensured a smooth transition and made me feel truly welcomed. Studying at Teesside was a transformative experience, and I highly recommend it to anyone looking for quality education in a dynamic and supportive environment”.

— Adhil

September 1 Exchange, 2024/5

We hope to see you soon!



Thank you

tees.ac.uk



**AMBITION
DELIVERED
TODAY**